



**"Beat more burglars with the only security mesh that uses Screw-Clamp™ technology."**

Patio Enclosures

# Doors

Windows

Cyclone  
Debris Screens

Safe-S-Capes®  
- Single Sliding  
- Double & Triple Sliding  
- Hinged  
- Inswinging

Commercial  
Systems

Balustrade &  
Pool Fencing

Fire  
Attenuation

WERS Rated



## Crimsafe doors are attractive and strong

Crimsafe security screen doors are available as hinged, sliding or stacking. If you prefer colonial designs and cast panels or doors with a natural wood look finish, Crimsafe has the products to suit. Whichever style of Crimsafe door you choose, it can be custom designed to complement your home, provide the protection Crimsafe has become renowned for and give you the freedom of lifestyle you grew up with.

All our doors feature the unique Crimsafe Screw-Clamp technology... tamper-resistant screws go through a metal clamp, then through the Tensile-Tuff® mesh and then they're driven right into the frame, to hold the mesh in a "vice-like" grip which gives the door enormous strength against attack.

*More about doors overleaf...*





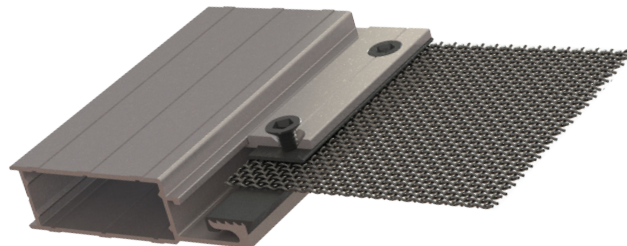


# Applications



## Increase security and enhance your lifestyle

- Anywhere that an attractive yet strong and secure door is required



## Features & Benefits of Crimsafe Doors

3-Point Locking	All our hinged and sliding doors come with 3-point locking as standard. Triple locks means added security.
3-Point Hinging	3 hinges give the door greater strength and make it much harder to gain entry through the door
Can be constructed out-of-square	If your door space isn't exactly square, don't worry. Our doors can be cut to suit any opening without a loss in strength.
Attractive Mid-rails standard option	Besides being an attractive feature of the door that can be positioned to match existing features of your home, our midrail boosts the door's strength and anti-jemmy properties. It also acts as a visual warning so you don't walk into the door.
Custom Built	Means a perfectly fitted job. Product can be made to fit the exact shape of your door. Using Cast Panel inserts or Colonial Designs we can match your new door precisely to your home.
Screw-Clamp Security	Only Crimsafe clamps 304 Tensile-Tuff® security mesh between 2 serrated pieces of metal, then drives a screw right through both mesh and frame to ensure a "vice-like" grip...and beat more burglars.
Tamper-Resistant Screws	Exclusive to Crimsafe. Screws can only be applied or removed by a tool registered with Crimsafe. This ensures the integrity of your security system.
Enhanced Lifestyle	Crimsafe provides unhindered views, keeps out mosquitoes, and lets you keep a cool, safe house in summer.
WERS Rated	Improves the energy rating of glass windows and doors and gives your home the ability to gain a higher home energy star rating.
Solar Heat Gain Reduction	Solar heat gain is reduced by up to 53% reducing dependence on air-conditioning and saving on energy bills.
Passes Australian and Industry Standards	Crimsafe always exceeds the relevant Australian and Industry Standards for security
Range of Colours	Crimsafe stocks a range of standard colours so that the system you buy complements your home. Other colours are available on request.
Guaranteed for 10 Years	Crimsafe warrants the product from defects in materials under the conditions of normal use for up to 10 years from the date of purchase. Please refer to our Warranty & Care Guide for more information.

*Only Crimsafe drives a screw right through mesh and frame – for unbeatable strength*



Contact your local Licensee today:

**02 6628 8011**

Authorised Crimsafe Licensee

5 Owens Crescent  
Russellton Industrial Estate  
Alstonville NSW 2477  
info@beesafesecurity.com.au  
www.beesafesecurity.com.au

Master lic. 000101638

Visit [www.crimsafe.com.au](http://www.crimsafe.com.au)

